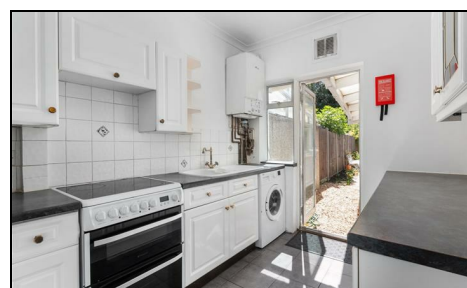


**Bushey Road
Raynes Park, SW20 0JN**

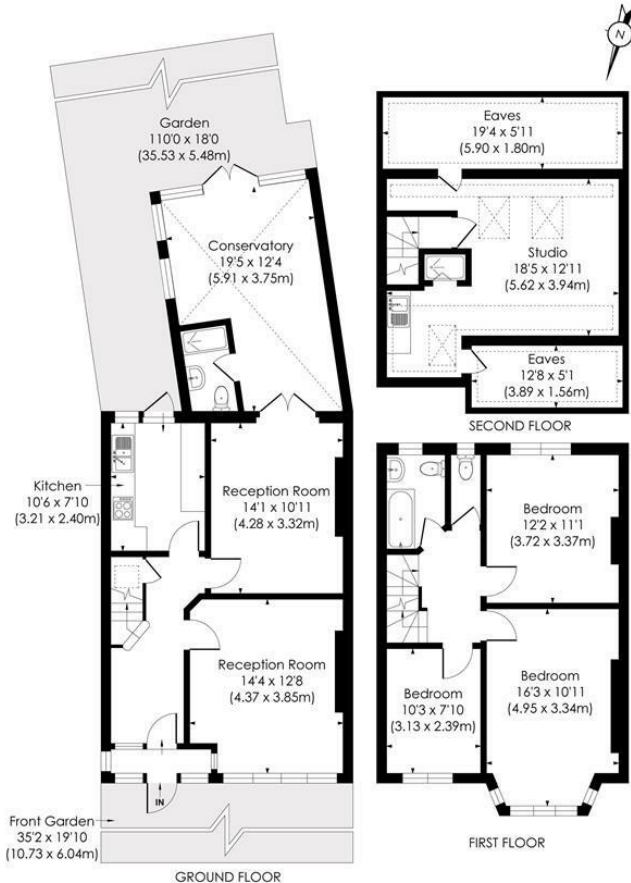
Offers In Excess Of £600,000 Freehold



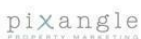
This spacious (1,587 sqft) and neutrally decorated THREE DOUBLE BEDROOM, 1930's Blay House is conveniently located only 0.2 Miles from Raynes Park Station and High Street. An excellent first/second time purchase with no onward chain. Benefiting from a good sized rear garden and potential to extend S.T.P.P.

BUSHEY ROAD, SW20

Approx. Gross Internal Floor Area
1755 Sq. ft/163.05 Sq. m (Incl. RHH)
1533 Sq. ft/142.41 Sq. m (Excl. RHH)

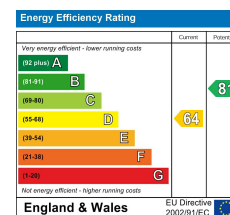
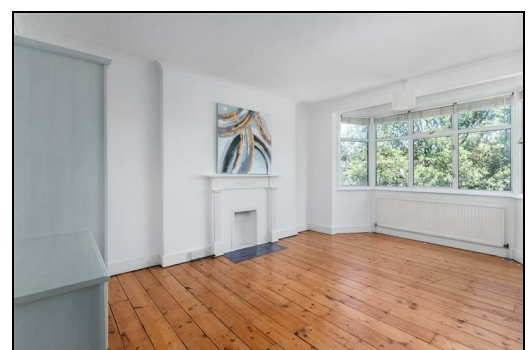


© Pixangle Property Marketing Ltd. info@pixangle.com Tel: 0208 870 2118



This floor plan has been prepared for the purpose of illustration only in accordance with the latest RICS code of measuring practice and is not to scale. All measurements and areas are approximate and whilst every effort has been made to ensure the accuracy of the plan contained here, no responsibility is taken for any error, omission or misstatement.

- Three Double Bedroom With Additional Loft Room
- Two Spacious Reception Rooms And A Conservatory
- Close To Raynes Park High Street And Station (0.2 Miles)
- Excellent First/Second Time Purchase
- No Onward Chain
- Good Sized Rear Garden
- Neutrally decorated
- Potential To Extend S.T.P.P.
- EPC - D
- Council tax Band - D



For Free Mortgage Quote and Best Mortgage Rates, call Ellisons Mortgage Advisor on 0208 944 9595



Although these particulars are believed to be correct, their accuracy is not guaranteed and they do not form part of any contract.

Celebrating 30 years of successful Sales and Lettings in Merton

